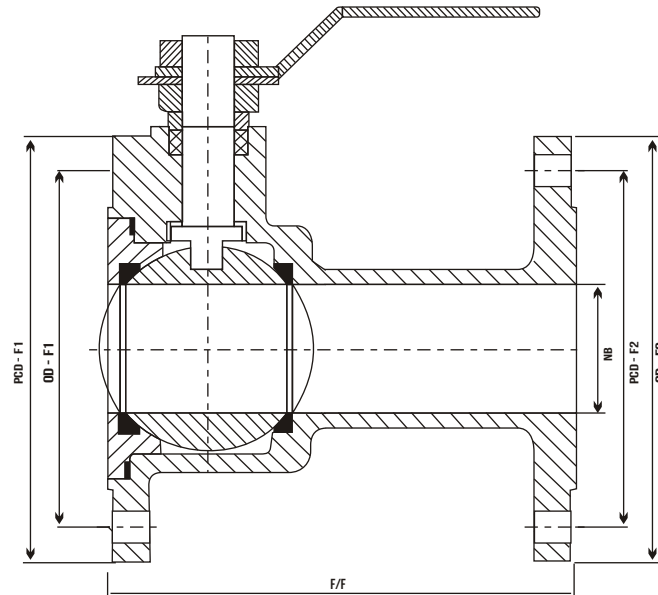
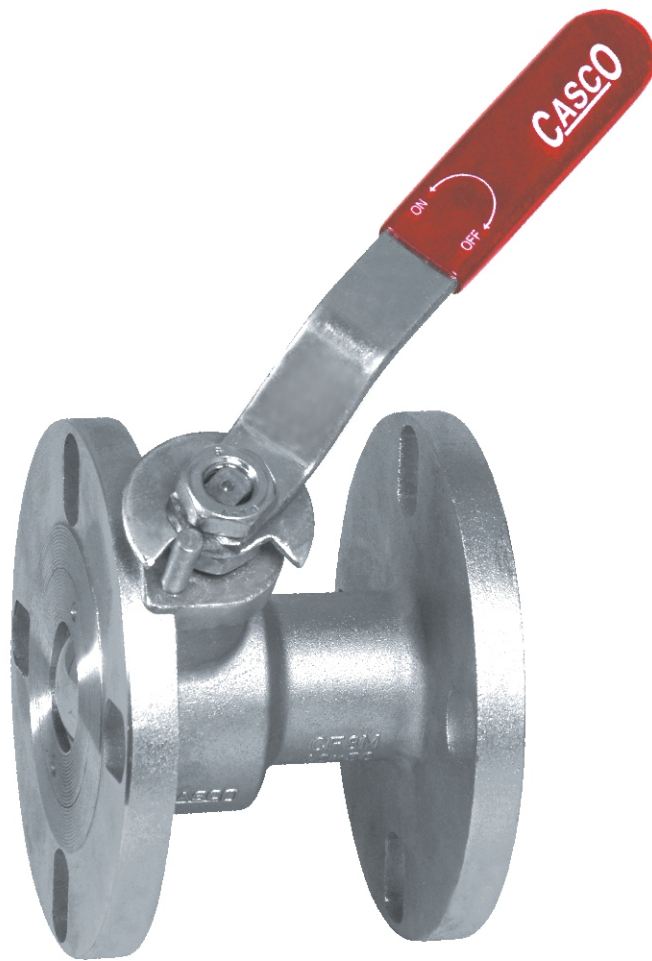




Flush Bottom Ball Valve



Features		Material Specifications		
DESIGN STD	AS PER BS 535 1	1	BODY	CF8M, CF3M ETC.
FACE TO FACE	MFG. STANDARD	2	SIDE PIECE	CF8M, CF3M ETC.
END CONNECTOR	ASA 150 #	3	BALL	SS 316, SS 316L, ETC.
TESTING STD	AS PER BS 5146, ISO 5208	4	SEAT/SEAL	PTFE ETC.

Detail of Dimension

Size In x Out	NB	F/F	Flange Dia. F1	PCD ON Flange F1	RF Dia. Flange F1	Hole Flange F1	Flange Dia F2	PCD Flange F2	RF Dia. Flange F2	Hole Flange F2
50 X 40	37	115	152.5	120.5	92	19 (4)	127	98.5	73	16 (4)
50 X 50	37	115	152.5	120.5	92	19 (4)	152.5	120.5	92	19 (4)
65 X 50	50	130	178	140	105	19 (4)	152.5	120.5	92	19 (4)
65 X 65	50	130	178	140	105	19 (4)	178	140	105	19 (4)
80 X 80	64	140	191	152.5	127	19 (4)	191	152.5	127	19 (4)
80 X 65	64	140	191	152.5	127	19 (4)	178	140	105	19 (4)
80 X 50	64	140	191	152.5	127	19 (4)	152.5	120.5	92	19 (4)
100 X 100	76	166	229	190.5	157	19 (8)	229	190.5	157	19 (8)
100 X 80	76	166	229	190.5	157	19 (8)	191	152.5	157	19 (4)

Salient Features

- (1) SINGLE PIECE DESIGN BODY
- (2) INVESTMENT CASTINGS BODY
- (3) OPERATING AT 45 DEG.
- (4) 300 # FLUSH BOTTOM BALL VALVE AVAILABLE ON BULK REQUIREMENT.

Hydro Test Pressure

SHELL	32 KG/CM ²
SEAT	22 KG/CM ²